



July 2015



THE MID-SOUTH WOODTURNERS GUILD





MSWG

BOARD OF DIRECTORS

President

Dennis Paullus

V.P.

Larry Cutliff

Secretary

Rich Williams

Treasurer

Joseph Voda

Librarian

Richard Hiller

Members at Large

Rich Pohland

Jerry Hosier

Webmaster

Mike Maffitt

Newsletter Editor

Larry Cutliff

Cover Photo

Scott Stone

Natural edge Cherry Bowl

IN THIS ISSUE

Page 03 - THE PRESIDENT'S CORNER

Page 05 - GENERAL MEETING MINUTES

Page 06 - WOOD SPIN by Emmett Manley

Page 09 - UPCOMING EVENTS

Page 10 - INSTANT GALLERY

Page 17 - MENTOR PROGRAM

Page 18 - ANNOUNCEMENTS

Page 19 - SPONSORS AND SUPPLIERS



Samples of spoons, spatulas etc. as demonstrated at our June meeting by Rick Stone. Rick added some steam bending to the mix as well. An excellent demonstration. Thank you Rick.

President's Corner



Hi everyone,
gosh this month has really
flown by. It's been hot and dry but I
hope you have had time to do some turning in
your nice cool shop.

Thanks to our own Rick Stone we had wonderful
and informative demonstration last month. I hope
you have tried some of the techniques that he
showed us.

This month we have my friend, David Rush, from
the TAW club in Nashville coming to give us a
demonstration on bowl turning. I'm looking
forward to his demo because I like turning bowls.

In August, we will have Mr Andy Woodard giving
a demonstration on boxes, which will be another
good demo.

September is still open.

October is a busy month, we have the Pink
Palace Crafts fair on the 9, 10, and 11th. Start
turning for that now. All members are eligible to
participate in this show by selling work or by
demonstrating. Oktoberfest, an all day event, will
be held on October 24th, at Joel Benson's
shop. More info to come soon

November is another busy month, Memphis
Empty Bowls is the 8th and any bowls you would
like to donate will need to be turned in by the
October meeting. These bowls can be turned in
any time starting now. Our November meeting is
still open as far as a demonstrator is concerned.

December is of course our Christmas Party
which is always a good time.

Remember our club is great because of the
membership, from doing club demos like Rick, to
helping set our room up for the meeting, making
coffee and getting donuts. It takes an awful lot
of energy to put on a meeting and every little
thing is important. Think about what you
personally can do for the club. First say hi to

By:
Dennis Paullus



your fellow members, bring a piece of wood for the raffle, bring a recent or not so recent piece to the instant gallery to show us what you have been doing. It seems we never have enough time during the meeting for all the things we like to do.

We have decided to extend our meeting time from 8:00 am till 1:00 pm to see how we like the extra time. It seems we are always rushed and

could use more time. The meeting will still start at 9:00 am and run until 1:00 ish. This should give us that little bit of extra time for more fellowship and we will not have to rush in the clean up stage. This is a trial only, if we do not like it we can go back to the regular time,

So I will see you all this coming Sat the 25th and remember come early and leave late.

Quick Tip

Recochem Inc. Chain Saw Oil Tips

All Season Chainsaw Oil

- Medium weight oil resists throw off across temperature range, reducing oil consumption
- Protects against rust and corrosion, increasing chain & bar life
- Excellent metal surface coverage provides protection and reduced wear
- Non-staining red color allows easy visual reference of chain lubrication while in operation and helps distinguish it from engine oil

Winter Weight Chainsaw Oil

- Light weight oil provides excellent flow and coverage at low temperatures experienced during winter season
- Protects against rust and corrosion, increasing chain & bar life
- Excellent metal surface coverage provides protection and reduced wear
- Non-staining red color allows easy visual reference of chain lubrication while in operation and helps distinguish it from engine oil

NOTE: For best results, pre-soak a new chain in light chain saw oil overnight. For longer chain life, clean in Recordsol Paint Thinner or other mineral spirits from time to time and soak in oil, as this will remove accumulated dirt deposits.

Tip provided by Joseph Voda

General Meeting Minutes

MIDSOUTH WOODTURNERS GUILD
General Meeting, June 27, 2015

Call to Order 9:00 AM

Dennis Paullus: President
(Larry Cutliff (VP) Presiding)

There were 48 members present when the meeting was called to order.

Old Business/New Business

1. Larry asked if we had any visitors and new members. Three visitors were present and we had two new members sign up during the meeting.
2. Joseph presented the Treasurer's report and it was posted for review by any interested members.
3. The minutes from the previous meeting were approved
4. Richard Hiller thanked members who had returned items to the library and asked members to check one last time to see if any items were still to be returned.
5. It was announced that Joseph Voda would chair the Oktoberfest preparation. It was mentioned that this is an excellent opportunity for members to socialize with other members.
6. Larry announced that Dennis would be chairing the Pink Palace committee for October. Further information would be forthcoming.
7. A new president's challenge was presented with the subject being a square bowl made from a piece of wood 8x8x2. Bowls are due at the September meeting. A sign-up sheet was passed around. Members who sign up but who did not present a bowl will owe the club \$10. The winner will get a \$25 prize.
8. Skip mentioned that the Delta Fair was coming up and had several categories for wood turning submission. Applications must be submitted by August 2 with the piece submitted by August 9.

After the new and old business was covered, the demonstration was presented by Rick Stone who showed how he turned spatulas and dippers.

The meeting was adjourned at 11:30 PM

Submitted: Rich Williams
Secretary

Wood Spin

Sand in wood? Fact or Fiction?



Sand, magnified

At various points in my ten years of woodturning experience, I have encountered the following statements:

“this wood is full of sand and will dull your saw and tools quickly”

“since that tree was growing in sandy soil, it will be filled with sand”

“trees suck up sand”

“Osage orange is full of sand and that is why it is so hard to cut”

Plus, at least a dozen variations on these statements, all authoritatively stating that wood which is hard to cut, and which quickly dulls tools, is wood with a high sand or “silica” content.

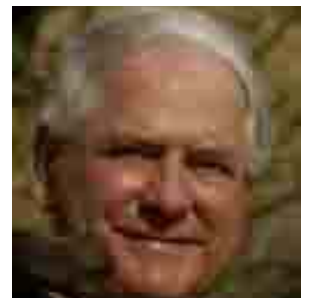
Please recognize, on the front end, that sand is not synonymous with silica.

Is this true? Or, are we dealing with old woodturners tales and mixed up correlations? I recall one famous scientist who believed, as a child, that tree limbs whipping around caused the wind to blow. It was not until he was ten years old, in the middle of the ocean, and encountering a lot of wind that he realized that his correlation was amiss. But it is certainly true that some woods are much more difficult to cut than others and that some woods will dull tools quickly.

In attempting to sort out the issue of sand in wood, I have dug around in all sorts of chemical and botanical sources, including contact with the person perhaps best qualified to provide the science needed to answer the question -- Rob Wallace, Ph.D., botanist and accomplished woodturner, Iowa State University. Via e-mail, Rob was kind enough to provide answers to many of my questions and to admit that he does not have all of the answers to this intriguing quest.

Let me provide a list of facts, some of which may raise more questions than they answer:

By:
Emmett Manley



Wood Spin cont.

1. Silicon Dioxide (which is quartz, which in small granules is termed "sand") is essentially insoluble in water or in the aqueous liquid we refer to as sap. If sand was water soluble, we would not have any beaches.

2. Sand granules are too large (and too insoluble) to move up a tree via the transport systems which exist in trees. This does not happen. There is no sand in a tree except that pressed into the wood by direct contact of the wood surface with sand.

3. If sand were in a particular wood, it should be visible to the naked eye when a fresh cut is made in that wood. Certainly visible with a simple magnifying glass. It is not there.

4. It is true that sand/quartz is a hard substance: 7 on the Mohs Hardness Scale where 1 is talc and 10 is diamond. Quartz will quickly dull saw blades and tool edges. No disagreement here.

5. Sand may be imbedded in logs which have rested on sandy soil.

6. All clean woods which quickly dull tools share the property of being dense and heavy. There are no light woods which dull tools. Osage orange dulls tools because it is an extremely dense and hard wood. Ditto for black locust.

7. Some forms of silicon are water soluble and can move within a tree's transport system and some of these silica can interact with endogenous chemicals and result in deposits of silica compounds. This is not a common situation.



Osage Orange Bowl

8. These deposited silica chemicals are probably (?) not hard crystals -- think more like table salt -- and are not especially dulling to tools. This is a shaky "fact" and subject to modification as the definitive investigations are conducted or uncovered.



Black Locust – dense and hard

9. However, over long periods -- many centuries? -- certain silica deposits can replace the natural wood structures. We call this "petrified" wood but understand that the petrification process is very slow and takes place underground.

So, what is the bottom line? At this point, and based upon what I have learned about sand chemistry and tree physiology, I am convinced that sand/quartz plays no role in the interior of trees relative to serving as an abrasive and thus dulling tools



Harvesting dead Osage Orange limbs

However, it remains to be determined whether or not other silicon -containing compounds, precipitated within the wood of certain trees, do play a role in making the wood harder. Certainly petrified wood is very hard, but can you “lightly petrify” wood over a period of a few decades? Remember, too, that the long term petrification process takes place under ground and under certain climatic conditions.

The definitive studies remain to be conducted; or, if scientists have already answered the question of silica in wood having a significant abrasive effect, I have been unable to locate the information. Unless they have a grant from a chainsaw or timber company, botanists would have little interest in investigating the role of precipitated wood chemicals as related to wood density and abrasiveness.



Cutting Black Locust

For those who insist that sand resides in the interior of certain trees, I refer them to no less than Albert Einstein who stated, “if the facts don’t fit the theory, change the facts.” Or to the English scientist, Julian Huxley, who observed, “the great tragedy of science -- the murder of a beautiful hypothesis by a brutal gang of facts.”

Upcoming Events/Deadlines

Events

July 25	David Rush - Bowl turning
August 22	Andy Woodard - Box demonstration
September 26	TBD
October 24	Oktoberfest Meeting, tool sale and swap
November 28	TBD
December	Annual Christmas Party and education fund raiser.

Deadlines

President's Challenge Jeff Brockett Challenge (square bowl) here is the challenge. Make a square bowl similar to what Jeff showed us how to do in his demo. The only requirements are that it be a square bowl shape and it is to be made from a 8" x 8" x 2" piece of wood, any kind of wood is ok.

Like the last challenge when you sign up for this challenge you commit to bring in a finished piece or pay a \$10 fee for not completing the challenge. the **winning piece as voted by the membership at the September meeting will win \$25**. Ten members have accepted the challenge to date.

Ongoing Pens for Troops

**We need volunteers and or ideas for guest demonstrators!!!
Please contact a board member with your ideas.**

Jerry Burch



Sycamore



Cherry



Poplar

Instant Gallery

Marcus Boyd



Box and Southwestern Pot

Larry Sefton



We'll Get together Then Maple, Kevlar, Magnets

Instant Gallery cont.

Jim Tusan



Sycamore Demo Piece

Karl Loeblein



Pin Oak Boiled, Microwaved, 2 weeks from cutting to finish

Instant Gallery cont.

Rick Gillespie



Brazilian Cherry and Maple

Scott Stone



Cherry natural edge

Instant Gallery cont.

Kevin Pearson



Walnut natural edge



Holly Root with Vietnamese Black Wood base



Walnut natural edge

Instant Gallery cont.

Lonnie Epperson



Osage Orange from Oktoberfest 2013

John Johnson



Lathe turned hook hanger for breadboard



Instant Gallery cont.

Rick Stone



Lathe turned ladles, spatula, fork, spoon, etc.

Instant Gallery cont.

Mentor Program

All members of MSWG are invited to contact the following mentors to learn a new technique, improve their turning skills or turn something different. Mentors are volunteers and do not charge.

Contact information is on our website under Members Only and the Roster. Sessions should last no longer than 3 hours and be scheduled at the convenience of the mentor.

Benson, Joel	Wood Selection, Turning Green Wood, McNaughton Coring, Chain Saw Sharpening/Maintenance, Chain Saw Use/Safety
Cannon, Rick	Segmented Bowls
Hosier, Jerry	Basic Stone and Wire Inlay, Woodturning Basics (Beads & Coves), Use of Spindle & Bowl Gouges
Maffitt, Mike	Trembleurs, Offset Turning
Manley, Emmett	Basic Woodturning, Green Wood Turning, Tool Handles, Natural Edged Bowls from Limbs, Bottle Stoppers, Bangles and Napkin Rings, Ring Stands, Osolnik Candlesticks, Hand Mirrors, Stick Pens, Madcap Mushrooms, Eggs, Dippers, Wine Bottles, Miniature Birdhouses, Kitchen Dippers, Mallets, Simple Salt & Pepper Shakers
Paullus, Dennis	Tool Use, Turning Safety, Hollow Vessels, Bowls, Boxes (Friction Fit or Threaded), Spindle Turning
Pillow, Wright	Inlaying: Marketry, Inlace, Epoxy
Seaton, Sam	Rose Engine Carving
Sefton, Larry	Milk Paint, Make Your Own Pyrography Unit, Hollow Forms
Stone, Rick	Finials, Bowls (incl. Natural Rim), Boxes, Spindles, Carving, Finishes, Pyrography, Making Tools, Turning Tool Basics (incl. Sharpening)
Tusant, Jim	Bowls, Hollow Forms, Pyrography, Carving, Dyeing, Tool Use
Voda, Joseph	Spindle Turning (e.g. Ornaments)
Wilbur, Skip	Bowls, Hollow Forms, Goblets, Finials

Announcements:

Submitted by: Ray Tanner

One of our members, **Rick Stone**, is offering his home shop every Thursday from 9 am to 4 pm for all who want to come by and get some help turning, preparing blanks for special projects, repairing tools or equipment, or just visiting with fellow members of the Mid South Woodturners Guild. The coffee pot is on, cold drinks are available and help or advice is there for the taking. Rick is a recently retired master plumber and master HVAC/gas fitter. He has many years of experience making and repairing mechanical systems and has all the tools necessary for wood and many metal projects. With three lathes in his spacious shop several turners can be working at one time. Of course his shop is air conditioned.

A visit with Rick and fellow woodturners can be a good introduction for participation in our guild's forthcoming early October Demonstration Booth at the Pink Palace Crafts Fair. John Johnson advises that popular turned objects for that fair include children's tops, honey dippers, and other small, quickly produced articles of everyday use. The weekly sessions at Rick's shop provide a convenient and pleasant opportunity to practice on some simple objects, especially if you have let your turning skills lapse, as I have.

A while back Rick assisted about ten of our members in making their own circle cutters and/or V-blocks for the bandsaw on a Saturday afternoon following one of our meetings. It was widely appreciated and all attending were pleased. You may reach Rick by phone (see our members registry) or simply show up at his shop next Thursday for a pleasant and productive time together.

His address is 5704 Montpelier Drive, Bartlett.

During the first Thursday session three MSWG members attended, among whom was Richard Hiller.

Submitted by: Skip Wilbur

We have had numerous means by which to expose our art/craft to the public and many ways to contribute to our community or others less fortunate than us; Empty Bowls, Beads of Courage to name a few. This fall we have a golden opportunity to introduce our art/craft to the public during the Pink Palace Art Fair. Let me introduce you to another event that should interest you, **Delta Fair** this August 4-13 at the Agricenter. They have a huge variety of arts/crafts with wood craft being one with a lot of sub categories. All items are judged and cash prizes given to top three places in each sub category. These are not large cash prizes, however enter enough items and you may have enough to treat your spouse to an evening at the fair and lunch or buy another tool. Please check them out online at deltafest.com.

To download an entry form and guideline click on "compete" then "crafts/culinary, collectibles" then you can download a pdf file of the entry form or a guideline booklet. We should also have some booklets available for you at the club meeting. Keep in mind that the entry forms are due on or before Aug 20 and items are to be brought to the Agricenter on Aug 29. Don't think you have to produce a gallery quality product, this is a county fair so let the public, friends and relatives see your work exposed and judged.

Sponsors and Suppliers

The Woodwork Shop, Inc
8500 Wolf Lake Drive
Suite 101
Bartlett, TN 38133

Phone: (901) 755-7355
Fax: (901) 755-2907
Email: thewoodworkshop@bellsouth.net



Jim Cole Tommy Crawford Evans Woodward Floyd Carter

The Woodturner's Source
1-800-683-8876

CRAFT SUPPLIES USA
THE WOODTURNERS CATALOG

Phone:
1-(800)-551-8876

<http://www.woodturnerscatalog.com/>